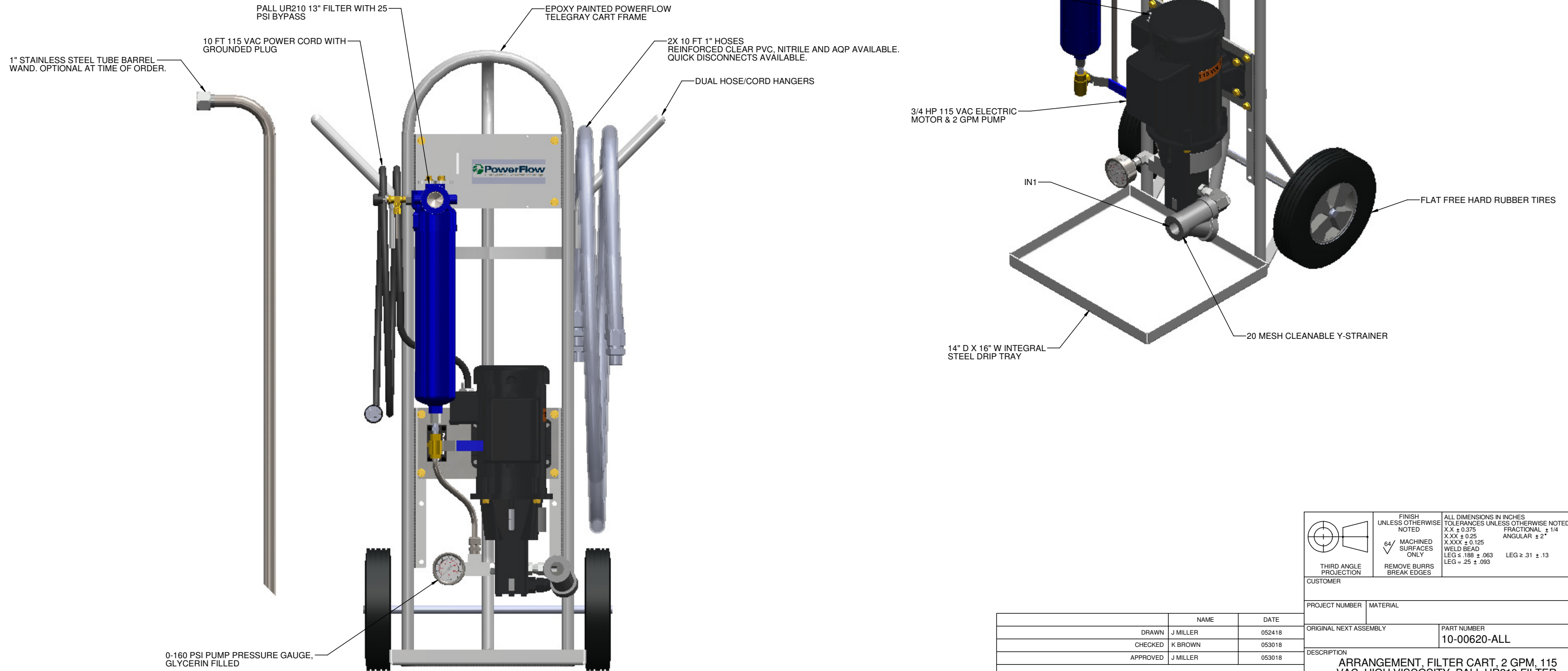
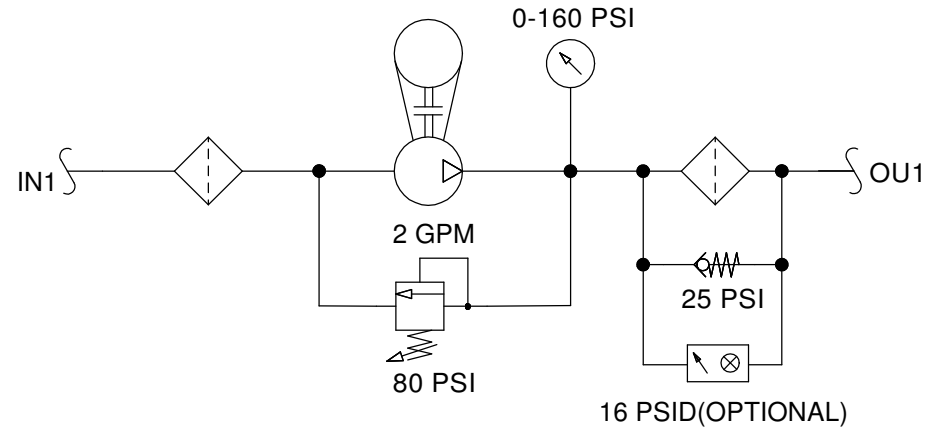


This drawing contains confidential technical data that is proprietary to PowerFlow Fluid Systems. The drawing, technical data, design rights and all other disclosures contained in this document are the property of PowerFlow Fluid Systems. Unauthorized use, copying, distribution to third parties, manufacture or reproduction in part or in whole is prohibited. All rights are reserved.

| PORT MATRIX | |
|-------------|--|
| PORT ID | CONNECTION |
| IN1 - OU1 | 1" FEMALE NPT, SAE 37 DEG FLARE OR QUICK DISCONNECT. VARIES WITH OPTIONS CHOSEN AT TIME OF ORDER |



UNCONTROLLED DRAWING COPY
NOT TO BE USED FOR PRODUCTION

| | NAME | DATE |
|----------|----------|--------|
| DRAWN | J MILLER | 052418 |
| CHECKED | K BROWN | 053018 |
| APPROVED | J MILLER | 053018 |



| | | |
|------------------------|--|--|
| THIRD ANGLE PROJECTION | FINISH UNLESS OTHERWISE NOTED | ALL DIMENSIONS IN INCHES TOLERANCES UNLESS OTHERWISE NOTED |
| | 6/ MACHINED SURFACES ONLY REMOVE BURRS BREAK EDGES | X.X ± 0.375 FRACTIONAL ± 1/4 X.XX ± 0.25 ANGULAR ± 2° X.XXX ± 0.125 WELD BEAD LEG ≤ .188 ± .063 LEG = .25 ± .093 |

| | | | | |
|--|------------------------------------|------------------|-------------------------------------|-----|
| CUSTOMER | | | | |
| PROJECT NUMBER | MATERIAL | | | |
| ORIGINAL NEXT ASSEMBLY | PART NUMBER 10-00620-ALL | | | |
| DESCRIPTION ARRANGEMENT, FILTER CART, 2 GPM, 115 VAC, HIGH VISCOSITY, PALL UR210 FILTER, FKM SEALS | | | | |
| SHEET 1 OF 1 | SCALE NONE | SIZE D | DRAWING NUMBER AR10-00620 | REV |